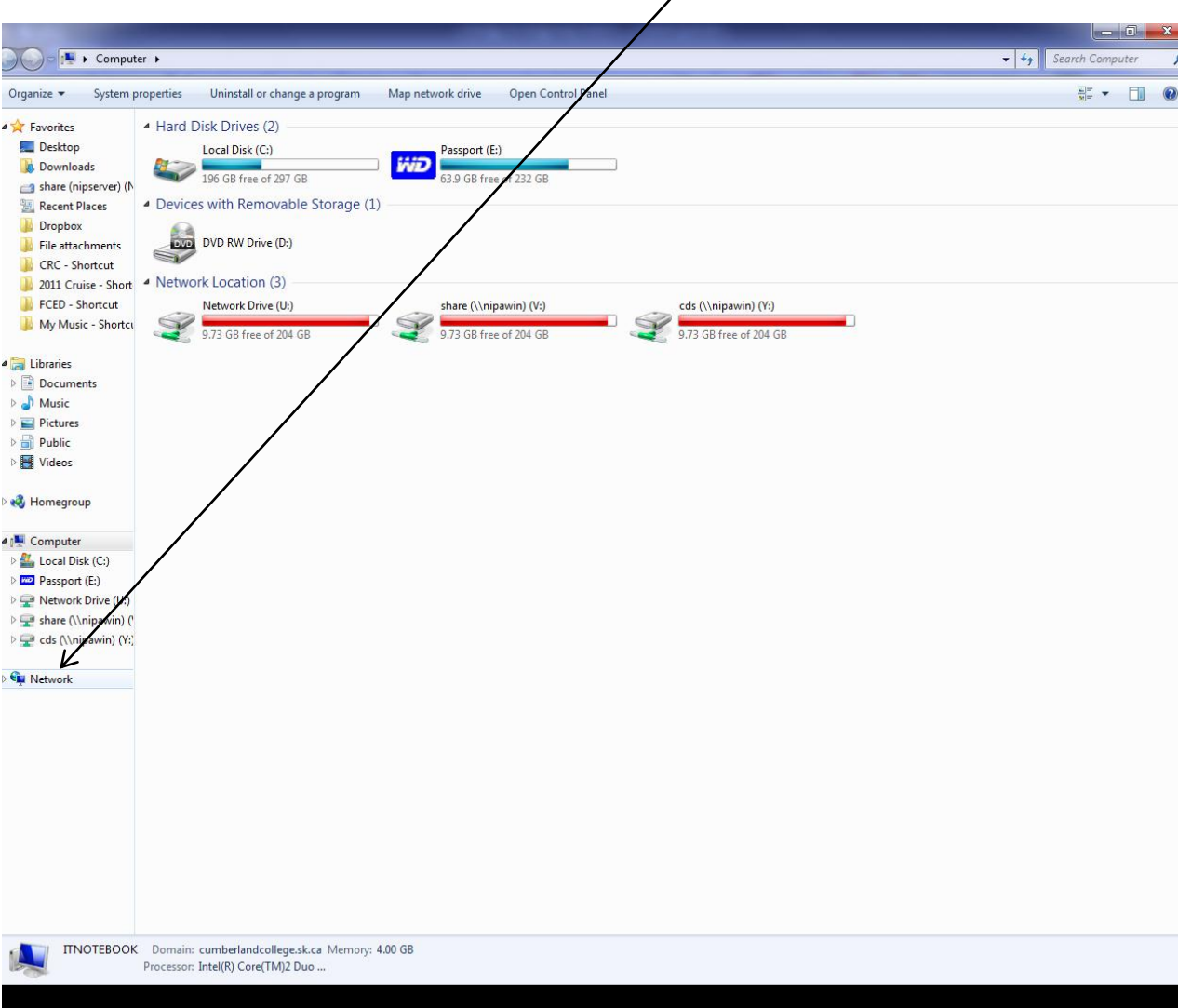


HOW TO WIRELESSLY CONNECT A LAPTOP TO OUR LCD PROJECTORS

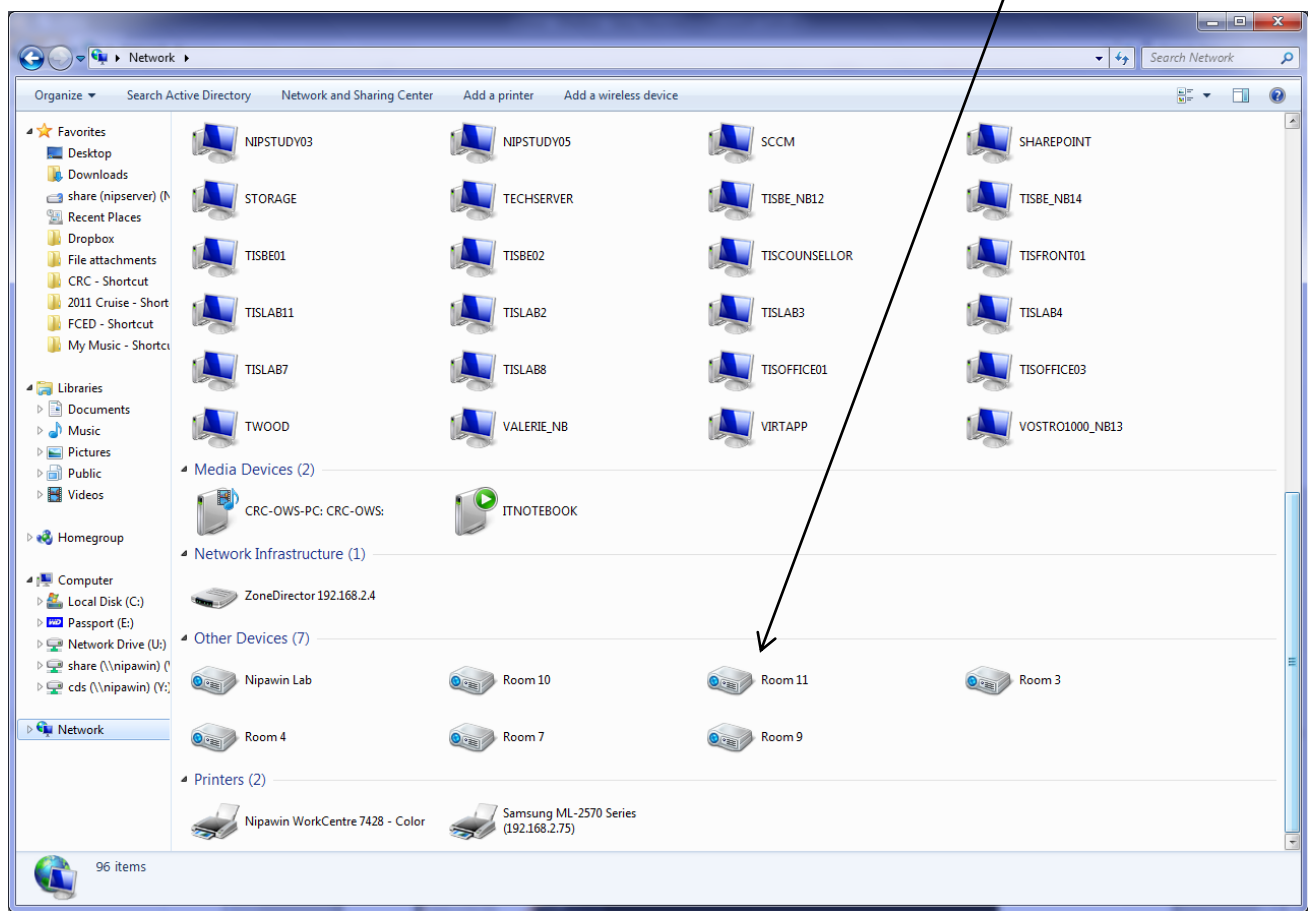
If your laptop has wireless capability, you can send your screen to any of our CRC LCD projectors. Here's how. First, you must be connected to one of our networks CRC, CRCGuest, or CRC_2. If you have logged in to any of these networks, then go to the START – COMPUTER as shown.



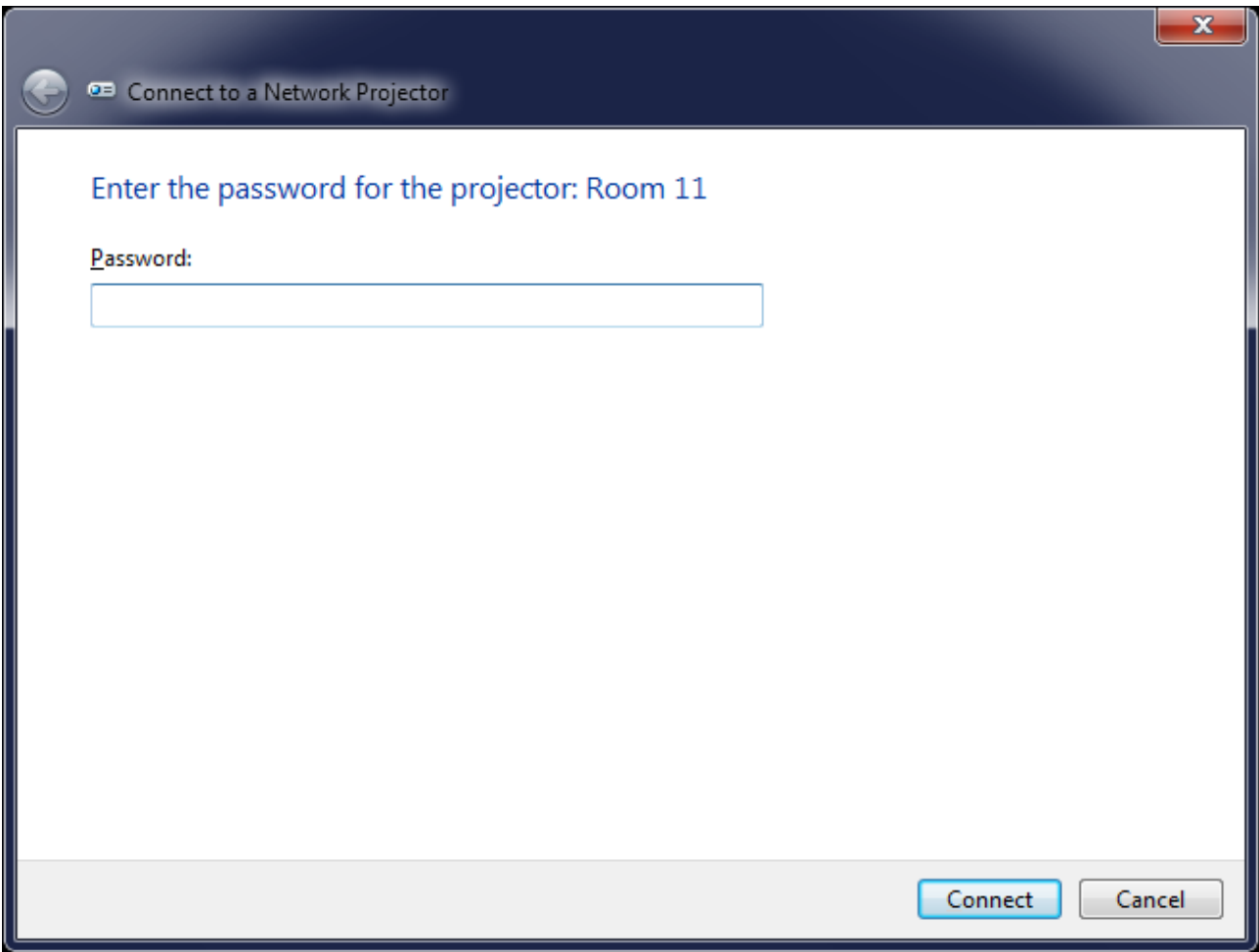
You will see this screen. Double click the Network icon here.



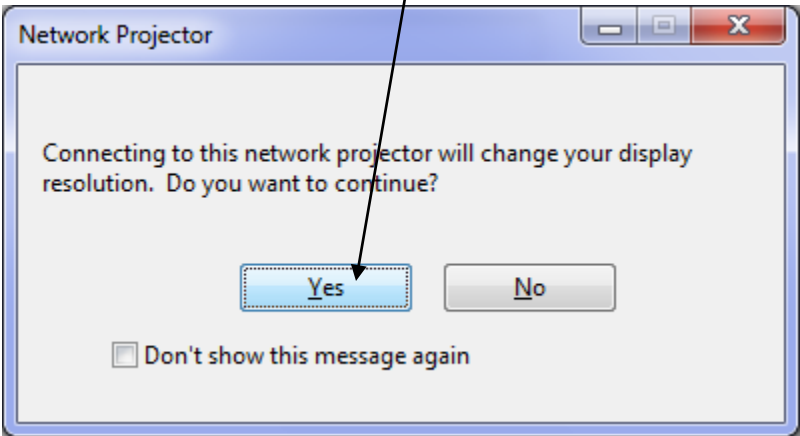
Wait a few minutes and then scroll to the bottom of the rather lengthy list of computer icons and you will see a list of the projectors on the network. Double click the projector for the room you are in.



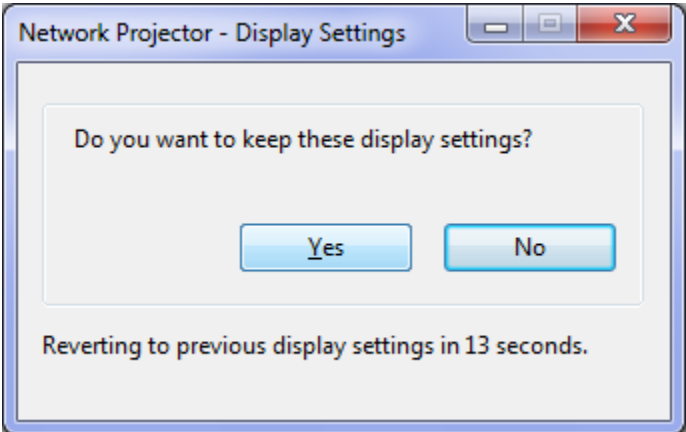
You will then get a screen like this asking for the password for the projector. Enter 1234. Click Connect.



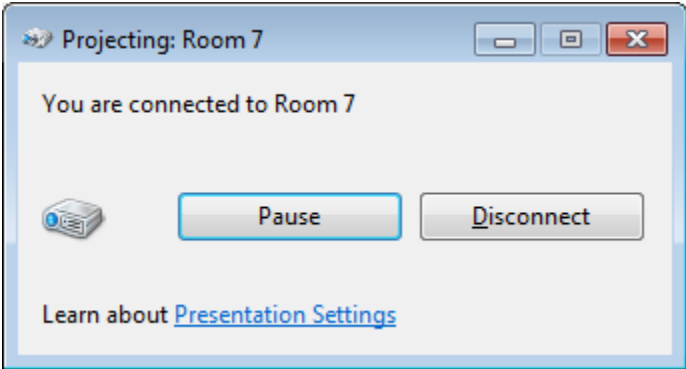
You may see this screen. Click Yes.



You will then see this screen. Click Yes.



You will then see this screen. Your laptop is now sending to the projector. Minimize the screen if necessary.



You need to tell the projector to accept the laptop's output. Go to the Remote control for the projector and click the Network button here and that will switch the LCD input to the network signal your computer is projecting.



Your computer should now be sending its video output to the screen.